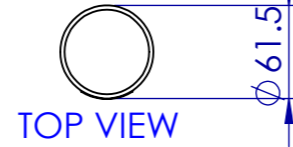
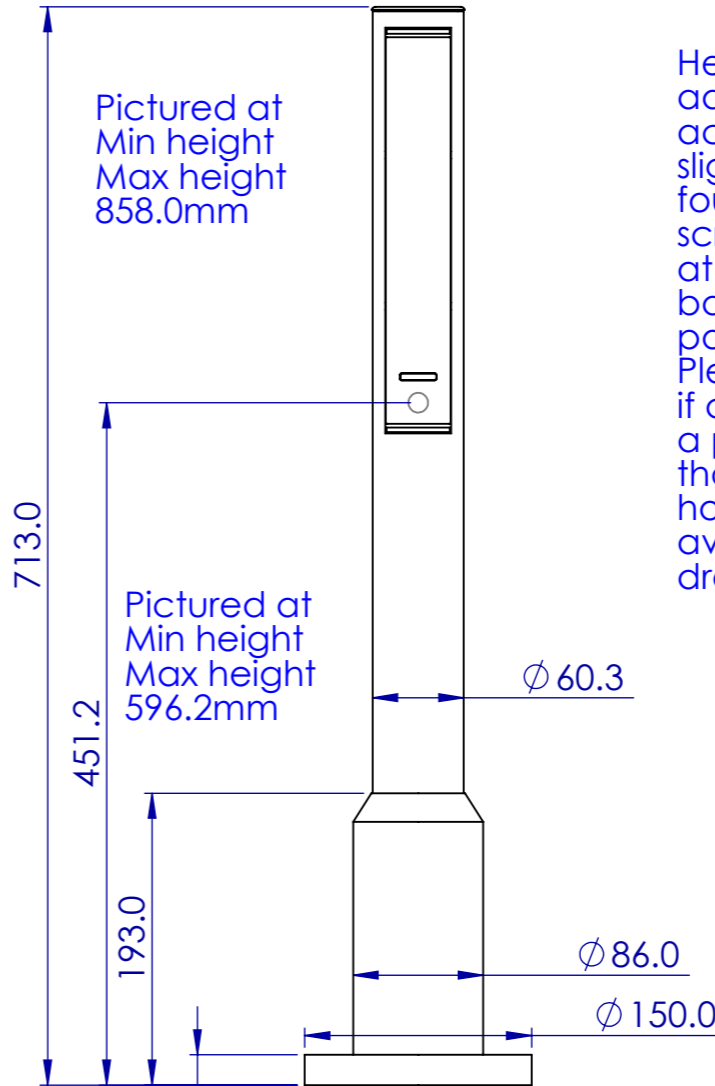
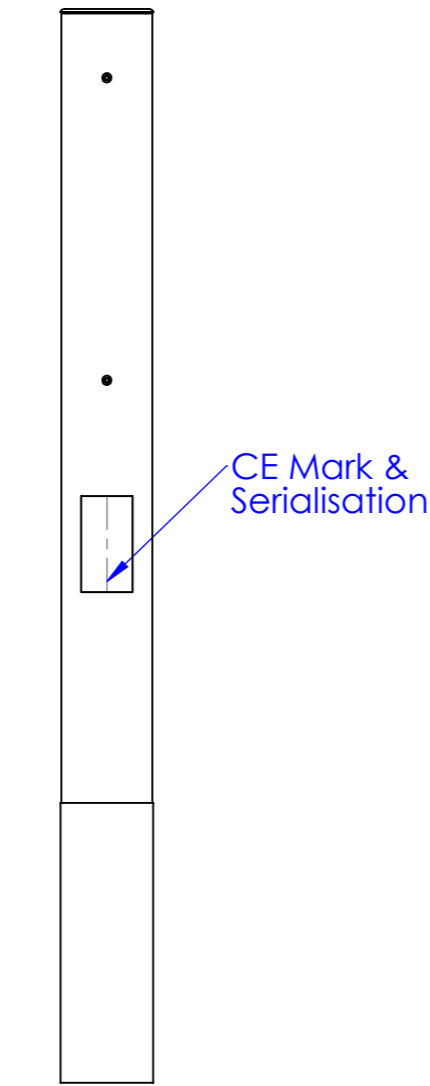
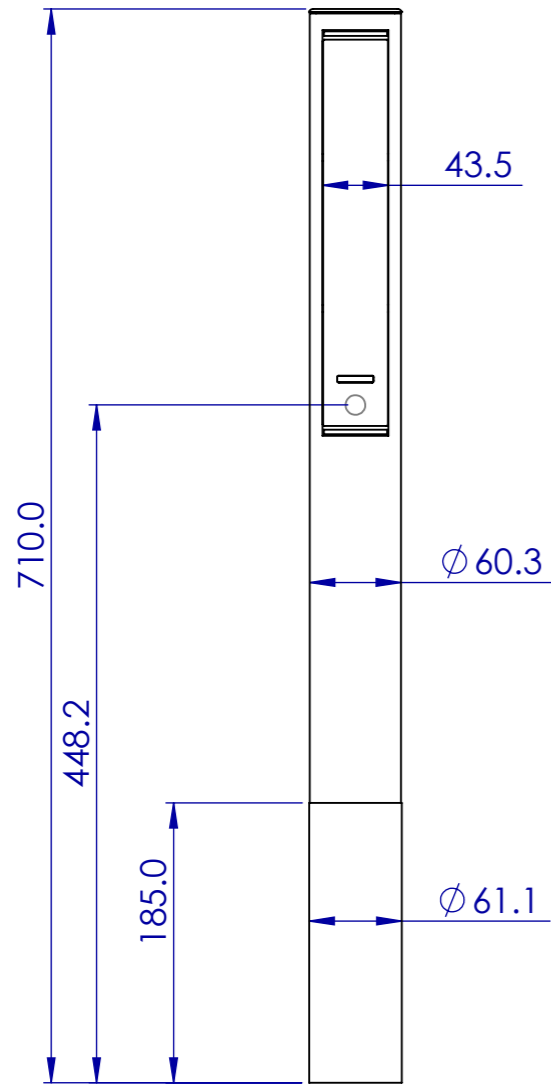


90-3531 ASLOC Single No Base

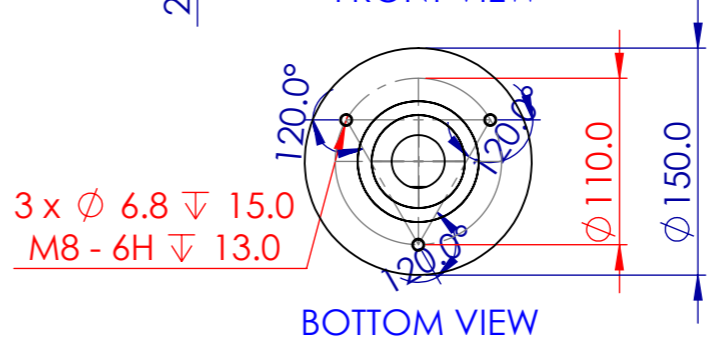
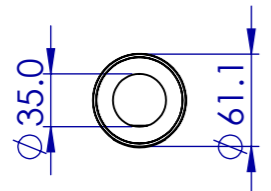
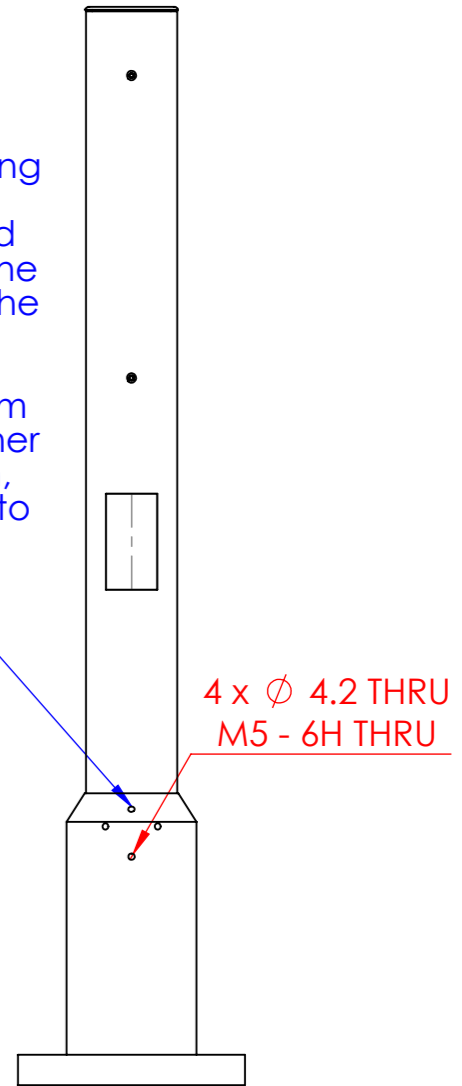
90-3531B ASLOC Single with Base



Max height adjustment 145mm



Height adjustment achieved by slightly loosening four M5 grub screws located at the top of the base, to free the pole to move. Please note if adjusting from a position higher than minimum, hold the pole to avoid it dropping.



|                   |           |                              |
|-------------------|-----------|------------------------------|
| FINISH:           |           | DEBURR AND BREAK SHARP EDGES |
| Black             |           |                              |
| NAME              | SIGNATURE | DATE                         |
| DRAWN M Wilkinson |           | 28/03/2022                   |
| CHK'D John Hyde   |           | 28/03/2022                   |

Perception Sensors & Instrumentation LTD.

|              |         |   |
|--------------|---------|---|
| Description: |         | ASLOC Pole Assembly - 710 Single 185mm Sleeve |
| MATERIAL:    | DWG NO. | REVISION:                                     |
|              |         | 1   |

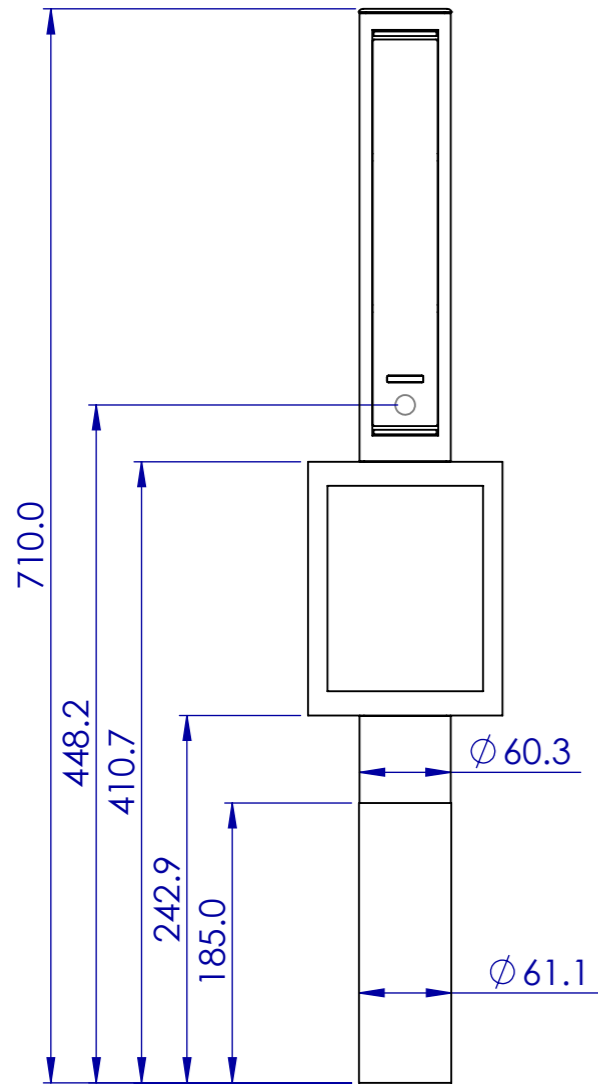
UNLESS OTHERWISE SPECIFIED: DIMENSIONS ARE IN MILLIMETERS and degrees TOLERANCES: LINEAR: 0.1 ANGULAR: 0.5

PROPRIETARY AND CONFIDENTIAL THE INFORMATION CONTAINED IN THIS DRAWING IS THE SOLE PROPERTY OF PERCEPTION SENSORS & INSTRUMENTATION LTD. ANY REPRODUCTION IN PART OR AS A WHOLE WITHOUT THE WRITTEN PERMISSION OF PERCEPTION SENSORS & INSTRUMENTATION LTD. IS PROHIBITED.

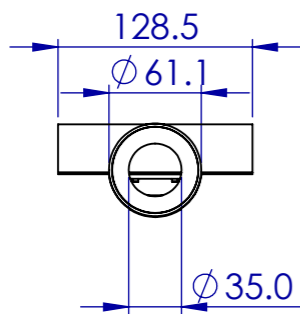
|                |            |                      |              |    |
|----------------|------------|----------------------|--------------|----|
| WEIGHT: 1084.0 | SCALE: 1:5 | DO NOT SCALE DRAWING | SHEET 1 OF 1 | A3 |
|----------------|------------|----------------------|--------------|----|

**90-3531P ASLOC Single + Portrait Screen  
No Base**

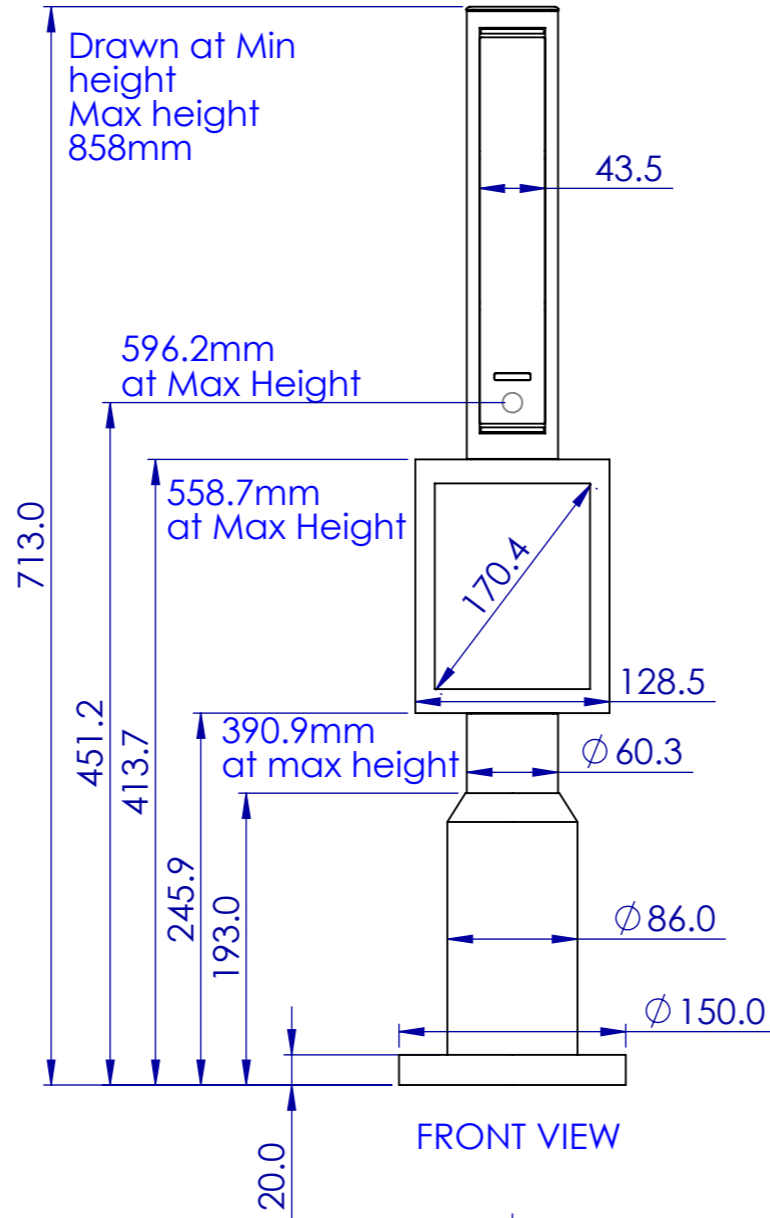
**90-3531PB ASLOC Single + Portrait Screen  
With Base**



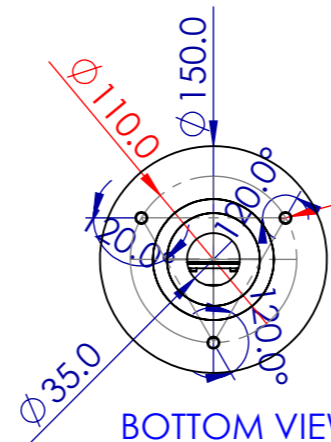
FRONT VIEW



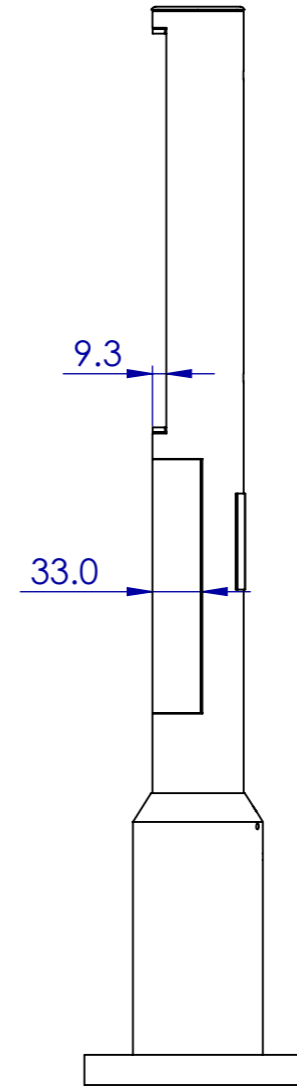
BOTTOM VIEW



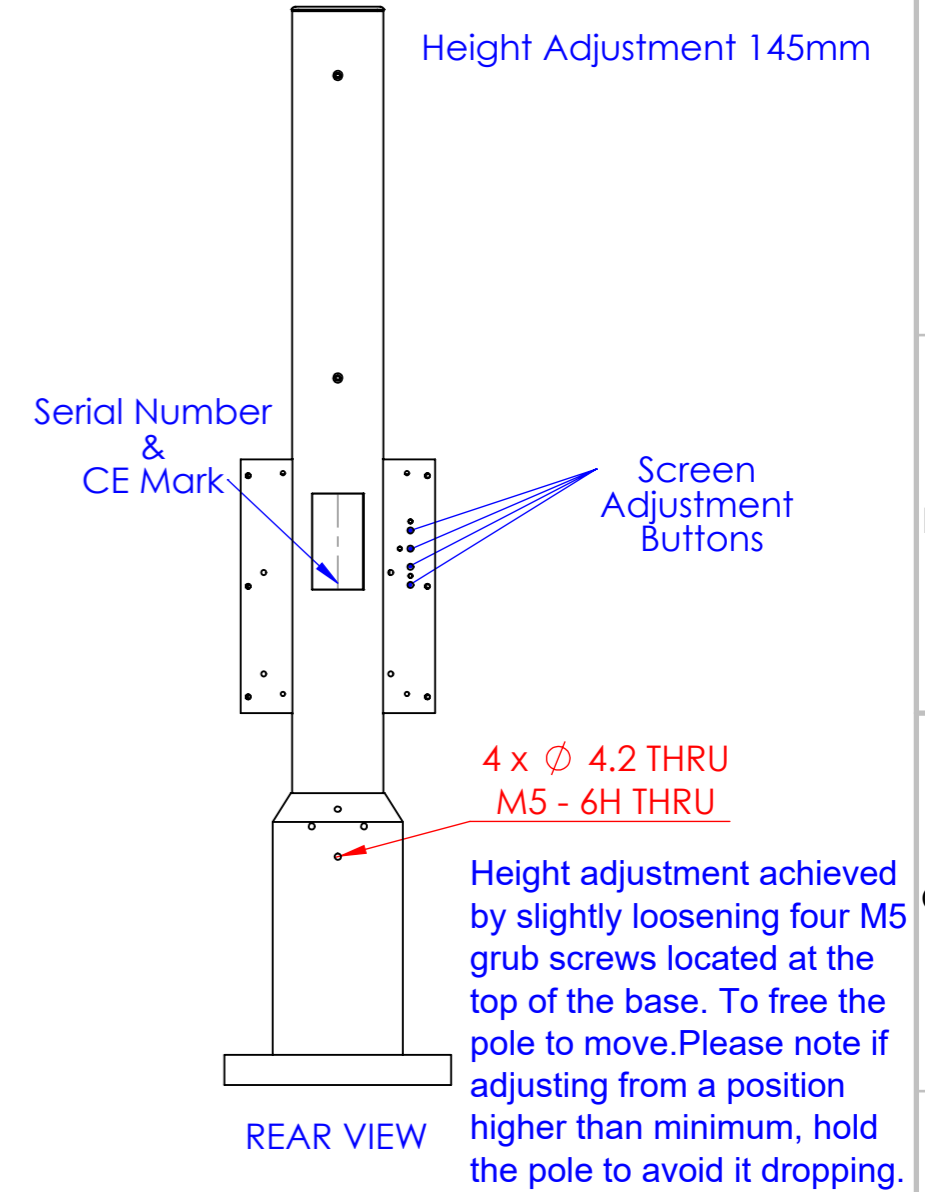
FRONT VIEW



BOTTOM VIEW



SIDE VIEW



REAR VIEW

UNLESS OTHERWISE SPECIFIED:  
DIMENSIONS ARE IN  
MILLIMETERS and degrees  
TOLERANCES:  
LINEAR: 0.1  
ANGULAR: 0.5

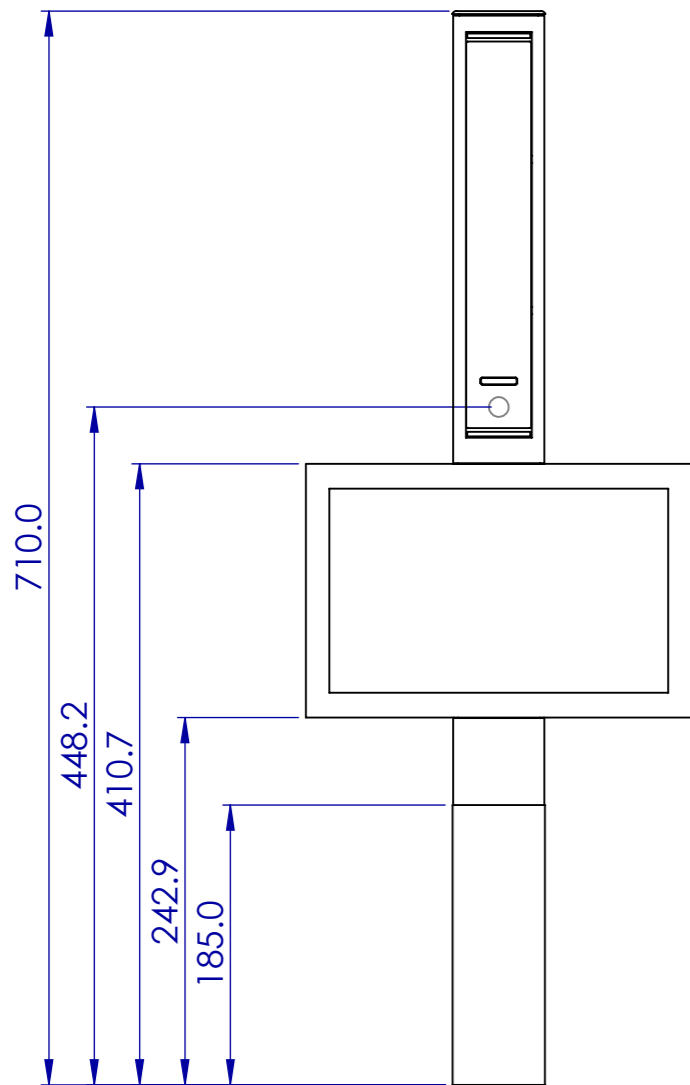
**PROPRIETARY AND CONFIDENTIAL**  
THE INFORMATION CONTAINED IN THIS DRAWING IS THE SOLE PROPERTY OF  
PERCEPTION SENSORS & INSTRUMENTATION LTD. ANY REPRODUCTION IN PART  
OR AS A WHOLE WITHOUT THE WRITTEN PERMISSION OF PERCEPTION SENSORS &  
INSTRUMENTATION LTD. IS PROHIBITED.

|                      |           |                                    |
|----------------------|-----------|------------------------------------|
| FINISH:<br>Black     |           | DEBURR AND<br>BREAK SHARP<br>EDGES |
| NAME                 | SIGNATURE | DATE                               |
| DRAWN<br>M Wilkinson |           | 28/03/2022                         |
| CHK'D<br>John Hyde   |           | 28/03/2022                         |

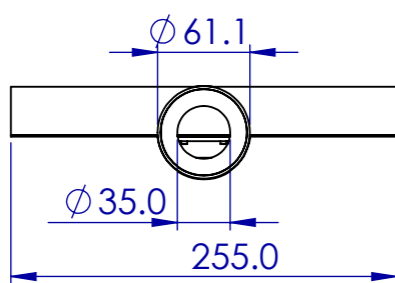
|   |   |                    |
|---|---|--------------------|
| <b>Perception Sensors &amp; Instrumentation LTD.</b>                      |   |                    |
| Description:<br>ASLOC Pole Assembly 710 185mm Sleeve with Portrait Screen |   |                    |
| MATERIAL:   | DWG NO.<br>PSI-ASLOC-POLEASSY-710-<br>PSCR-01 | REVISION:<br>1     |
| WEIGHT: 2122.2  | SCALE: 1:5<br>DO NOT SCALE DRAWING            | SHEET 1 OF 1<br>A3 |

**90-3531L - Single with Landscape Screen  
No base**

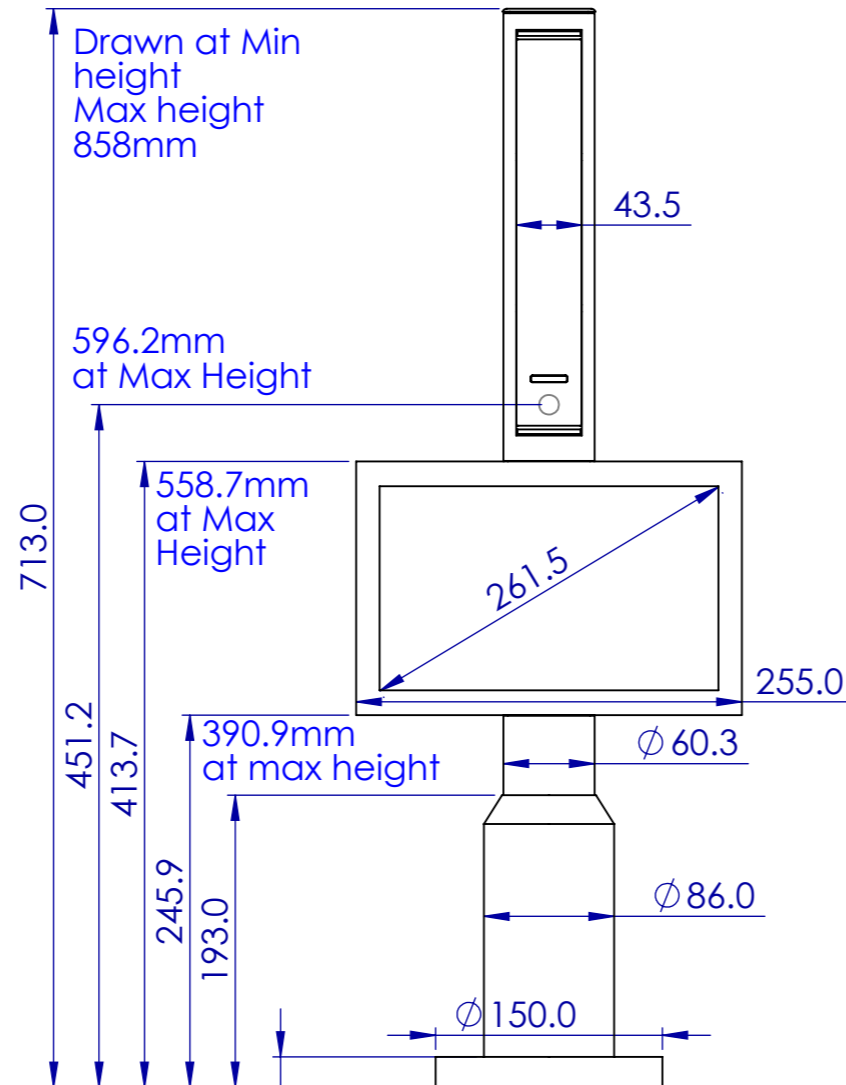
**90-3531LB - Single with Landscape Screen  
With base**



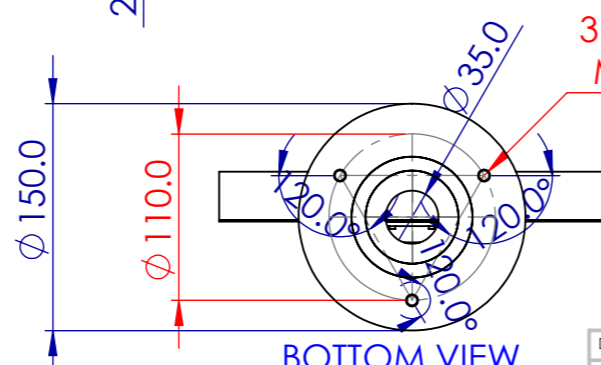
FRONT VIEW



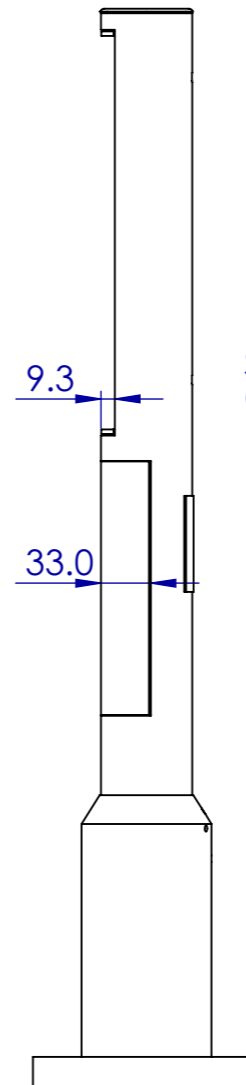
BOTTOM VIEW



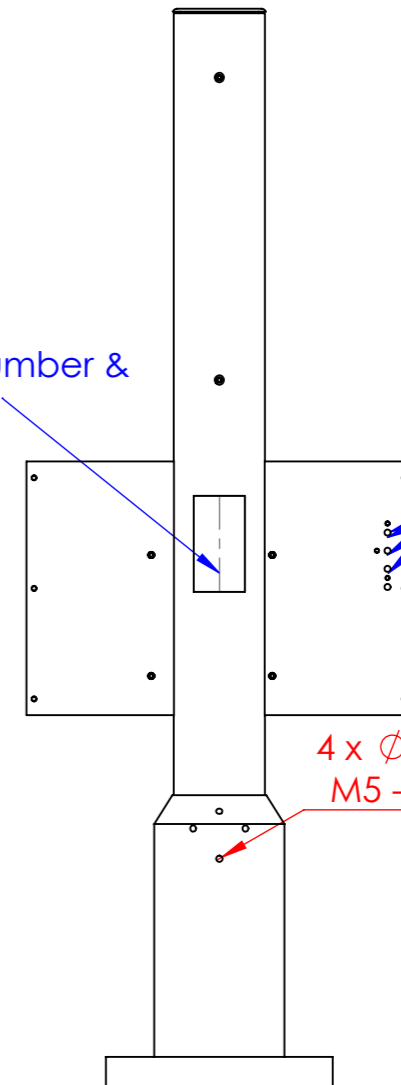
FRONT VIEW



BOTTOM VIEW



SIDE VIEW



REAR VIEW

Serial Number & CE Mark

Screen Adjustment Buttons

4 x Ø 4.2 THRU  
M5 - 6H THRU

Height adjustment achieved by slightly loosening four M5 grub screws located at the top of the base. To free the pole to move. Please note if adjusting from a position higher than minimum, hold the pole to avoid it dropping.

|                   |           |                              |
|-------------------|-----------|------------------------------|
| FINISH:           |           | DEBURR AND BREAK SHARP EDGES |
| Black             |           |                              |
| NAME              | SIGNATURE | DATE                         |
| DRAWN M Wilkinson |           | 28/03/2022                   |
| CHK'D John Hyde   |           | 28/03/2022                   |

**Perception Sensors & Instrumentation LTD.**

Description:  
ASLOC Pole Assembly 710 185mm Sleeve with Landscape Screen

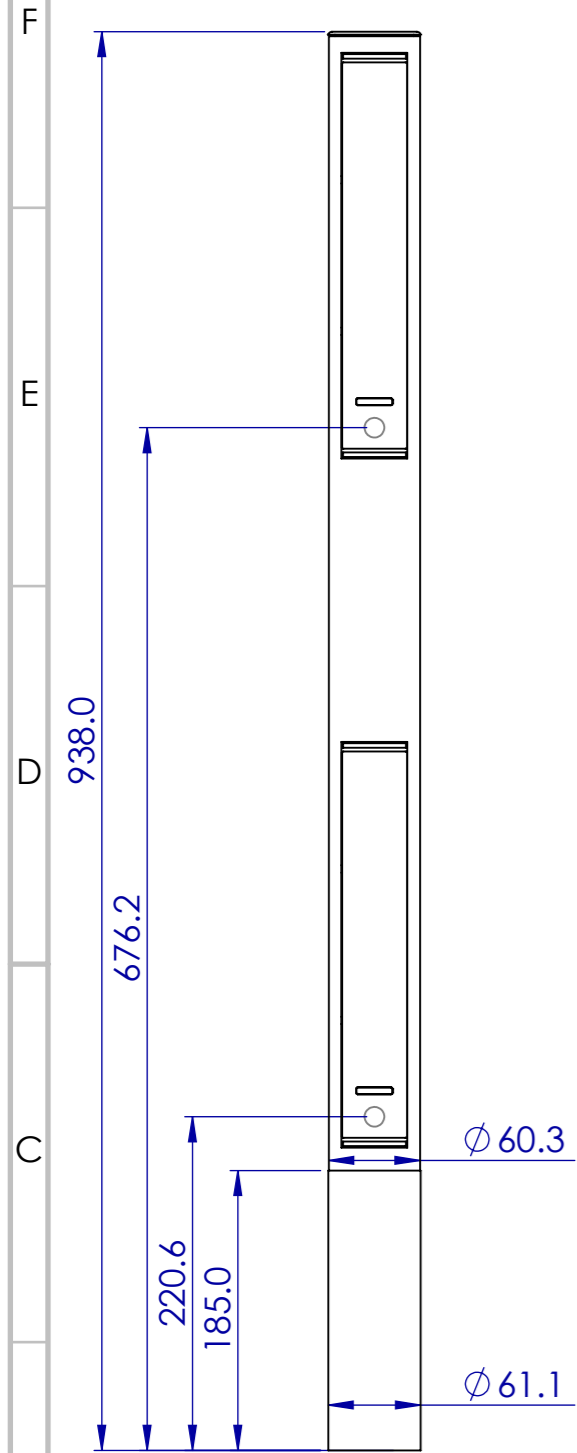
|                |                                |           |
|----------------|--------------------------------|-----------|
| MATERIAL:      | DWG NO.                        | REVISION: |
| WEIGHT: 2472.8 | PSI-ASLOC-POLEASSY-710-LSGR-01 | 1         |
| SCALE: 1:5     | DO NOT SCALE DRAWING           | A3        |

UNLESS OTHERWISE SPECIFIED: DIMENSIONS ARE IN MILLIMETERS and degrees TOLERANCES: LINEAR: 0.1 ANGULAR: 0.5

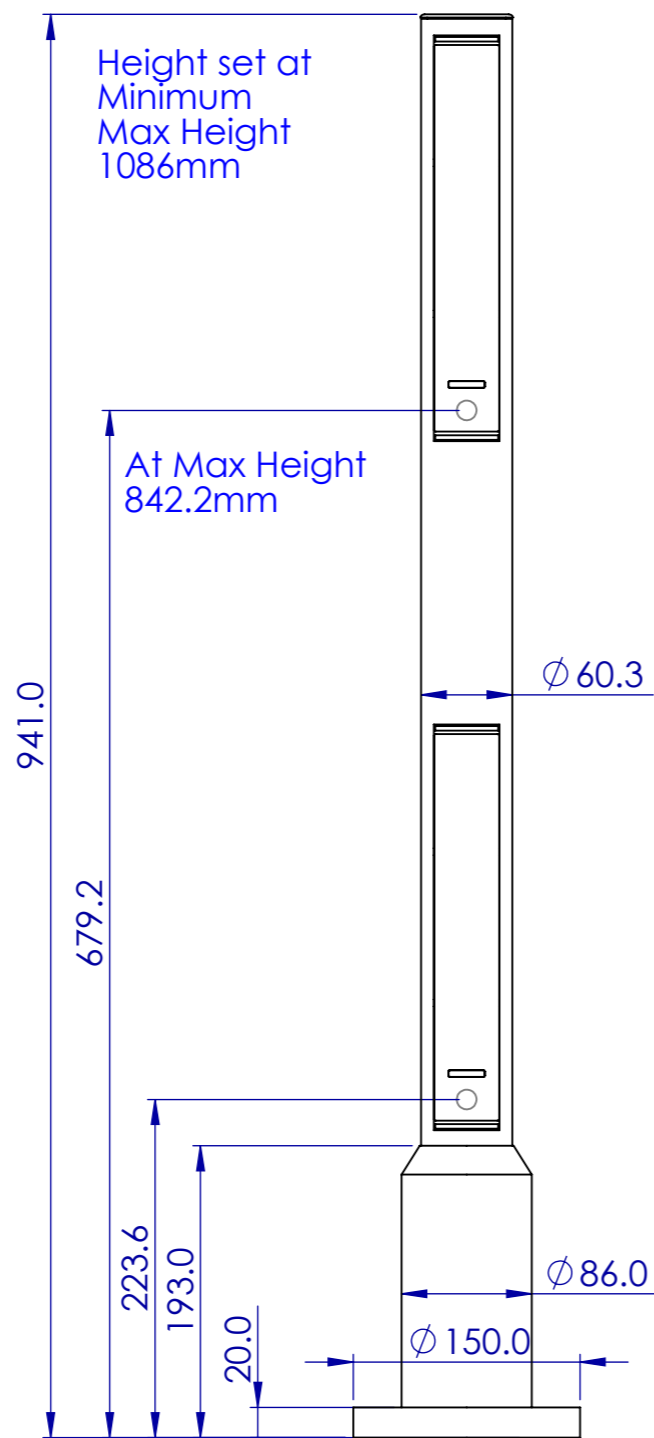
PROPRIETARY AND CONFIDENTIAL THE INFORMATION CONTAINED IN THIS DRAWING IS THE SOLE PROPERTY OF PERCEPTION SENSORS & INSTRUMENTATION LTD. ANY REPRODUCTION IN PART OR AS A WHOLE WITHOUT THE WRITTEN PERMISSION OF PERCEPTION SENSORS & INSTRUMENTATION LTD. IS PROHIBITED.

90-3532 - Standard Dual Pole

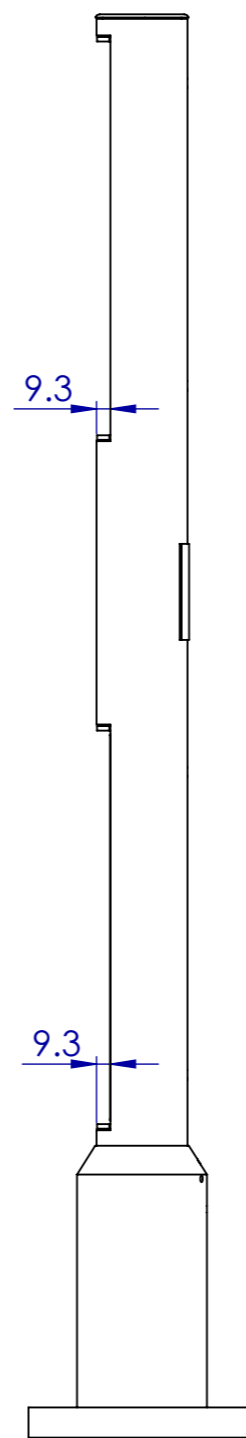
90-3532B - Standard Dual Pole with Base



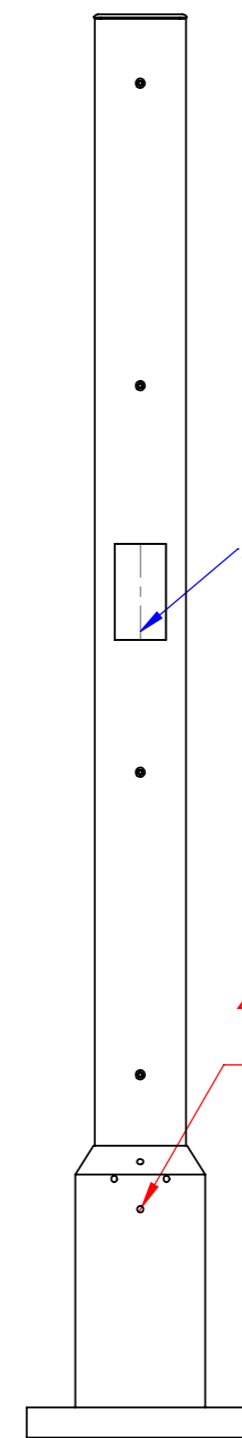
FRONT VIEW



FRONT VIEW



SIDE VIEW



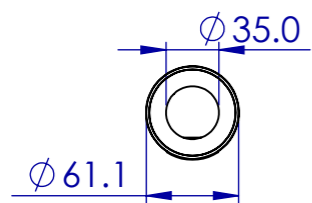
REAR VIEW

Max Height Adjustment 145mm

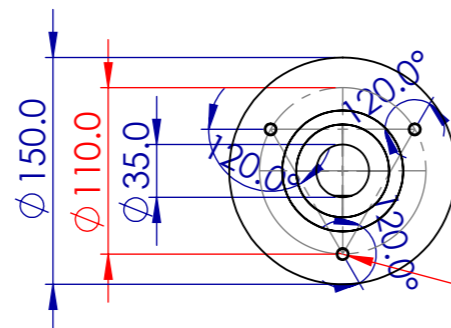
Serial Number & CE Mark

4 x  $\phi$  4.2 THRU  
M5 - 6H THRU

Height adjustment achieved by slightly loosening four M5 grub screws located at the top of the base. to free the pole to move. Please note if adjusting from a position higher than minimum, hold the pole to avoid it dropping.



BOTTOM VIEW



BOTTOM VIEW

3 x  $\phi$  6.8  $\nabla$  15.0  
M8 - 6H  $\nabla$  13.0

|             |           |                              |
|-------------|-----------|------------------------------|
| FINISH:     |           | DEBURR AND BREAK SHARP EDGES |
| Black       |           |                              |
| NAME        | SIGNATURE | DATE                         |
| M Wilkinson |           | 28/03/2022                   |
| CHK'D       | John Hyde | 28/03/2022                   |

**Perception Sensors & Instrumentation LTD.**

|              |         |                              |
|--------------|---------|------------------------------|
| Description: |         | ASLOC 938 Dual Pole Assembly |
| MATERIAL:    | DWG NO. | REVISION:                    |
|              |         | 1                            |

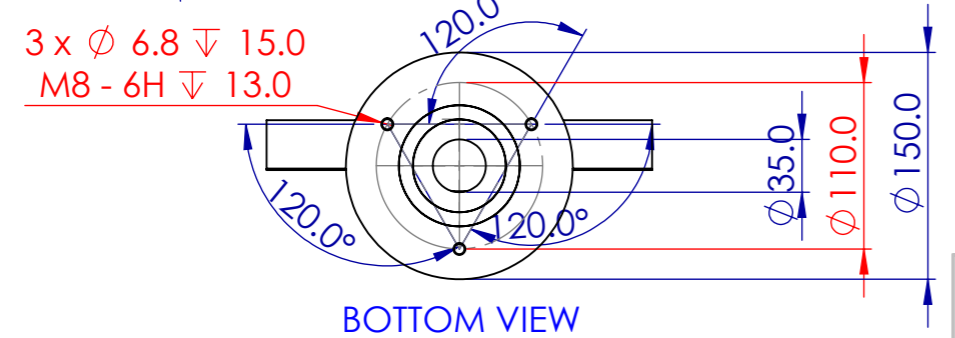
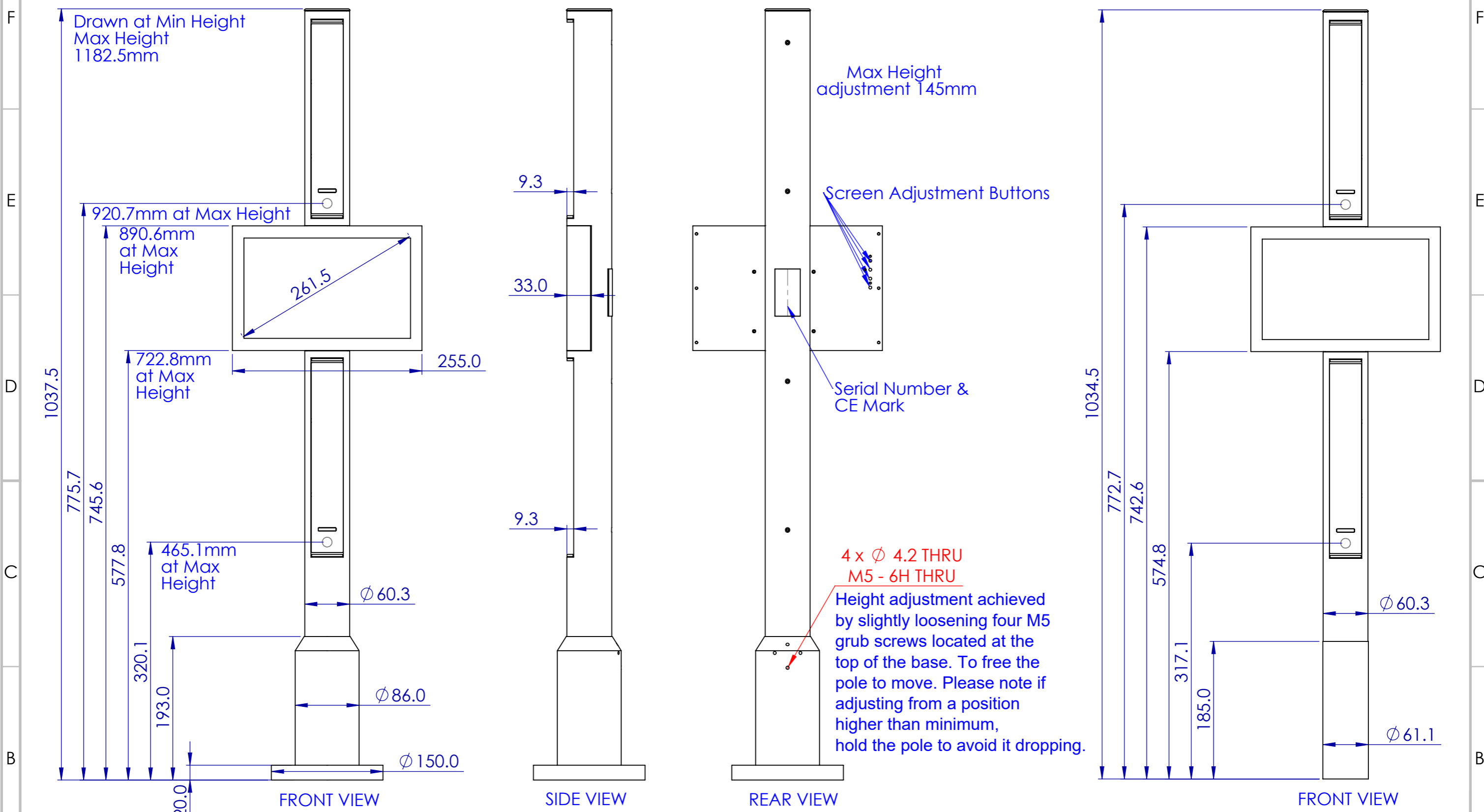
UNLESS OTHERWISE SPECIFIED:  
DIMENSIONS ARE IN MILLIMETERS and degrees  
TOLERANCES:  
LINEAR: 0.1  
ANGULAR: 0.5

**PROPRIETARY AND CONFIDENTIAL**  
THE INFORMATION CONTAINED IN THIS DRAWING IS THE SOLE PROPERTY OF PERCEPTION SENSORS & INSTRUMENTATION LTD. ANY REPRODUCTION IN PART OR AS A WHOLE WITHOUT THE WRITTEN PERMISSION OF PERCEPTION SENSORS & INSTRUMENTATION LTD. IS PROHIBITED.

|                |            |                      |              |    |
|----------------|------------|----------------------|--------------|----|
| WEIGHT: 2193.7 | SCALE: 1:5 | DO NOT SCALE DRAWING | SHEET 1 OF 1 | A3 |
|----------------|------------|----------------------|--------------|----|

**90-3532LB Dual IR + Landscape Screen With Base**

**90-3532L Dual IR + Landscape Screen No Base**



|                   |           |                              |
|-------------------|-----------|------------------------------|
| FINISH:           |           | DEBURR AND BREAK SHARP EDGES |
| Black             |           |                              |
| NAME              | SIGNATURE | DATE                         |
| DRAWN M Wilkinson |           | 28/03/2022                   |
| CHK'D John Hyde   |           | 28/03/2022                   |

**Perception Sensors & Instrumentation LTD.**

Description: ASLOC1034.5 Pole with Landscape Screen

|                |   |              |
|----------------|---|--------------|
| MATERIAL:      | DWG NO. PSI-ASLOC-POLEASSY-1034.5-LSCR-01 | REVISION: 1  |
| WEIGHT: 2943.0 | SCALE: 1:5                                | SHEET 1 OF 1 |

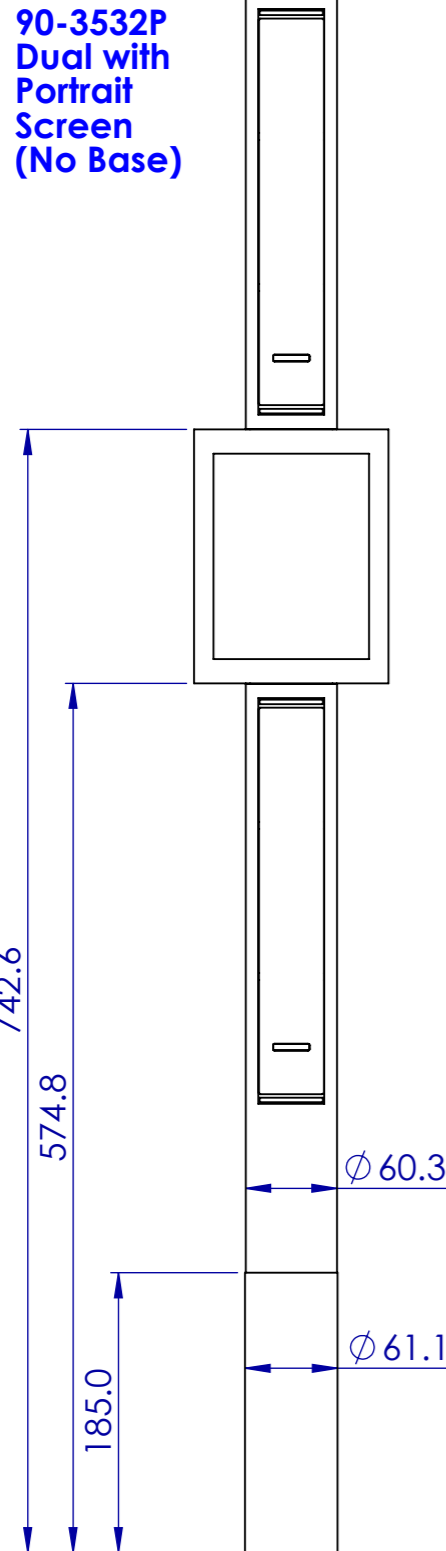
DO NOT SCALE DRAWING

UNLESS OTHERWISE SPECIFIED: DIMENSIONS ARE IN MILLIMETERS and degrees TOLERANCES: LINEAR: 0.1 ANGULAR: 0.5

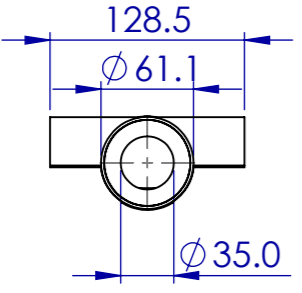
PROPRIETARY AND CONFIDENTIAL THE INFORMATION CONTAINED IN THIS DRAWING IS THE SOLE PROPERTY OF PERCEPTION SENSORS & INSTRUMENTATION LTD. ANY REPRODUCTION IN PART OR AS A WHOLE WITHOUT THE WRITTEN PERMISSION OF PERCEPTION SENSORS & INSTRUMENTATION LTD. IS PROHIBITED.

8 7 6 5 4 3 2 1

F  
E  
D  
C  
B  
A

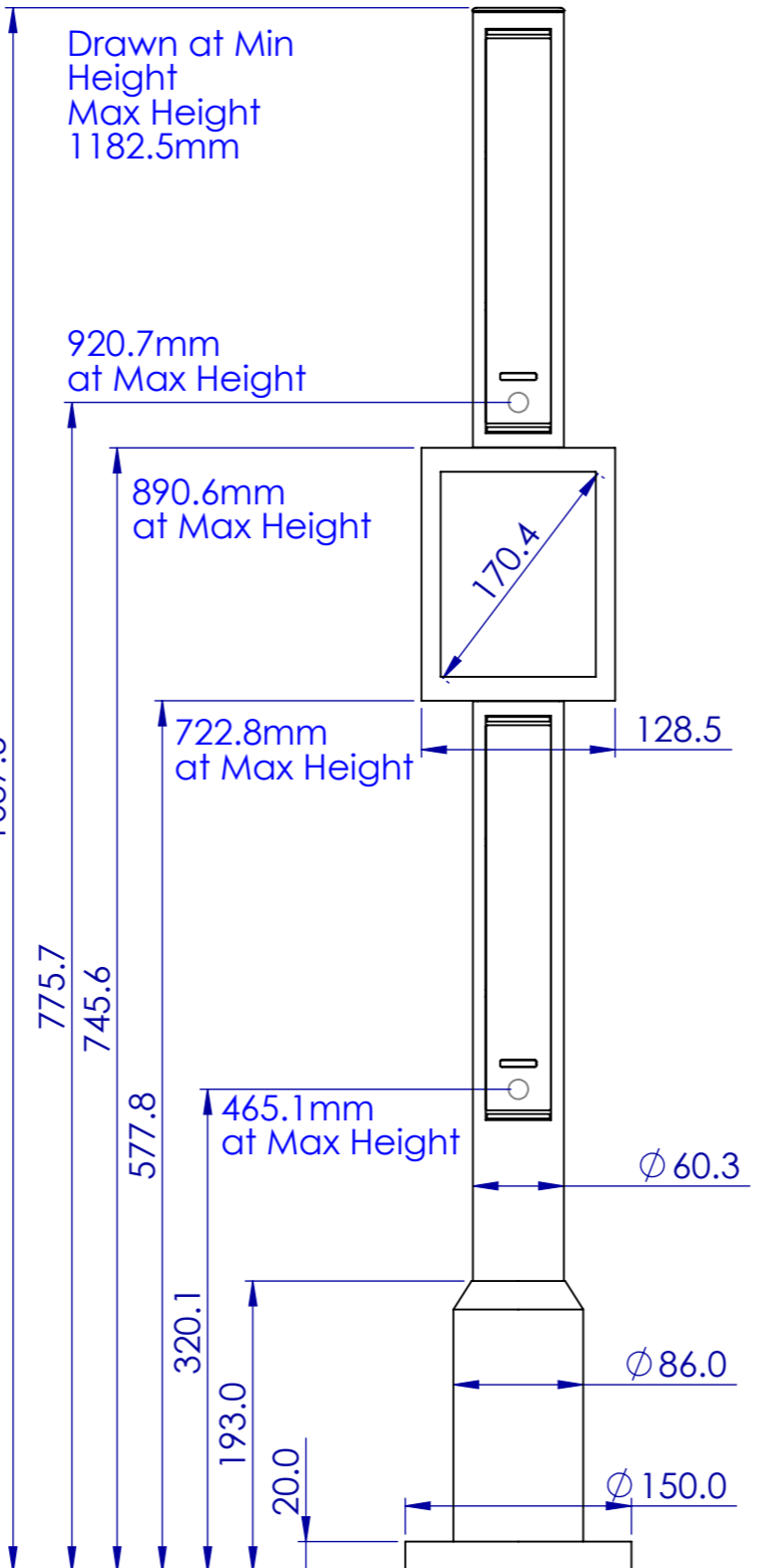


FRONT VIEW

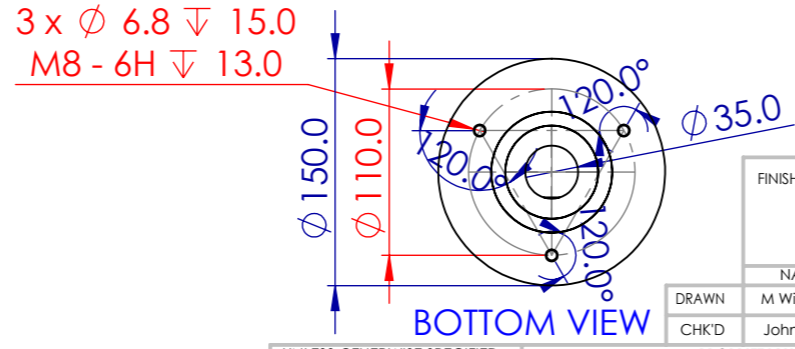


BOTTOM VIEW

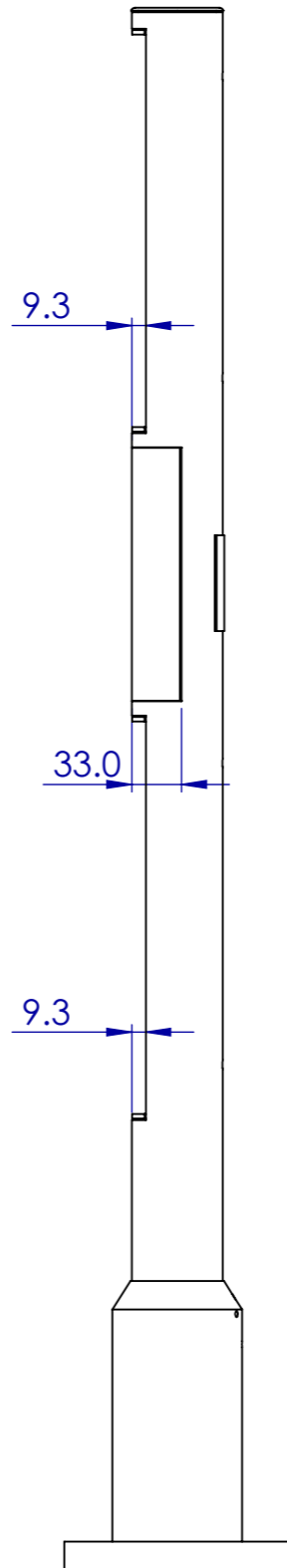
**90-3532PB  
Dual with  
Portrait  
Screen  
(with Base)**



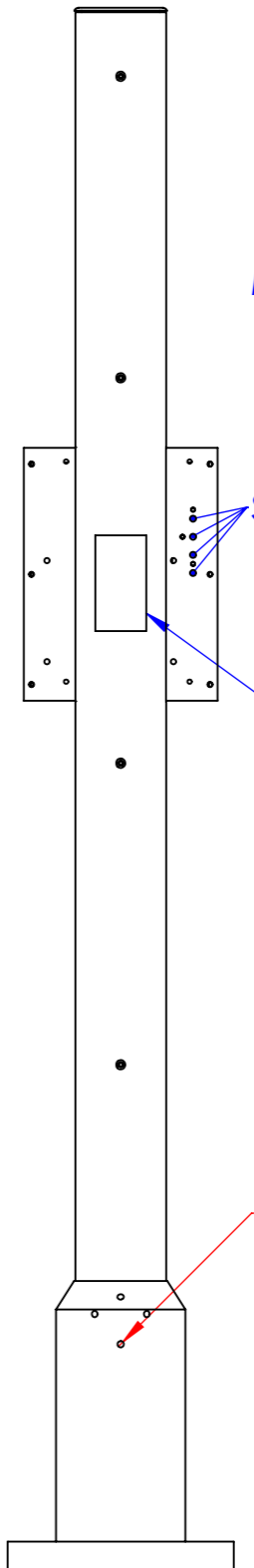
FRONT VIEW



BOTTOM VIEW



SIDE VIEW



REAR VIEW

Max Height Adjustment 145mm

Screen Adjustment Buttons

Serial Number & CE Mark

4 x Ø 4.2 THRU  
M5 - 6H THRU

Height adjustment achieved by slightly loosening four M5 grub screws located at the top of the base. To free the pole to move. Please note if adjusting from a position higher than minimum, hold the pole to avoid it dropping.

UNLESS OTHERWISE SPECIFIED:  
DIMENSIONS ARE IN  
MILLIMETERS and degrees  
TOLERANCES:  
LINEAR: 0.1  
ANGULAR: 0.5

PROPRIETARY AND CONFIDENTIAL  
THE INFORMATION CONTAINED IN THIS DRAWING IS THE SOLE PROPERTY OF  
PERCEPTION SENSORS & INSTRUMENTATION LTD. ANY REPRODUCTION IN PART  
OR AS A WHOLE WITHOUT THE WRITTEN PERMISSION OF PERCEPTION SENSORS &  
INSTRUMENTATION LTD. IS PROHIBITED.

|         |             |                                    |
|---------|-------------|------------------------------------|
| FINISH: |             | DEBURR AND<br>BREAK SHARP<br>EDGES |
| NAME    |             | SIGNATURE                          |
| DATE    |             |                                    |
| DRAWN   | M Wilkinson | 28/03/2022                         |
| CHK'D   | John Hyde   | 28/03/2022                         |

**Perception Sensors & Instrumentation LTD.**

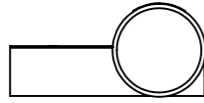
Description:  
ASLOC1034.5 Pole with Portrait Screen

|                |                                       |              |
|----------------|---------------------------------------|--------------|
| MATERIAL:      | DWG NO.                               | REVISION:    |
| WEIGHT: 2592.4 | PSI-ASLOC-POLEASSY-<br>1034.5-PSCR-01 | 1            |
| SCALE: 1:5     | DO NOT SCALE DRAWING                  | SHEET 1 OF 1 |

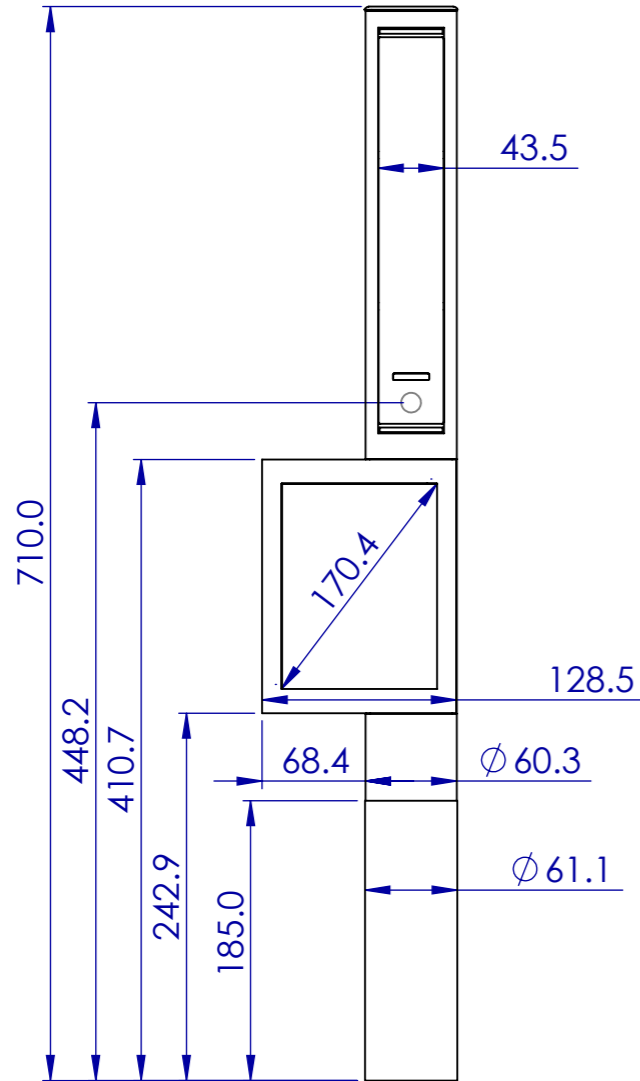
8 7 6 5 4 3 2 1

**90-3531P (LO) 710 ASLOC IR Single + Portrait Screen (Left Offset)  
No Base**

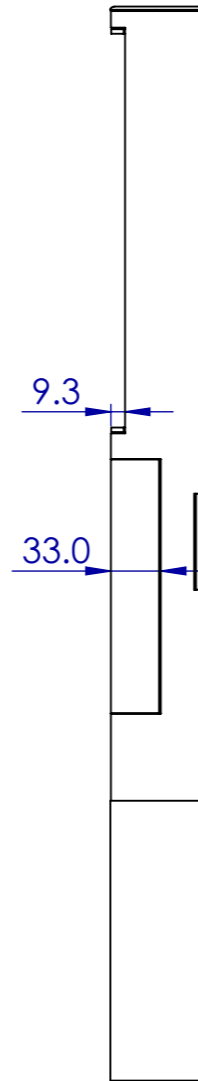
Top View



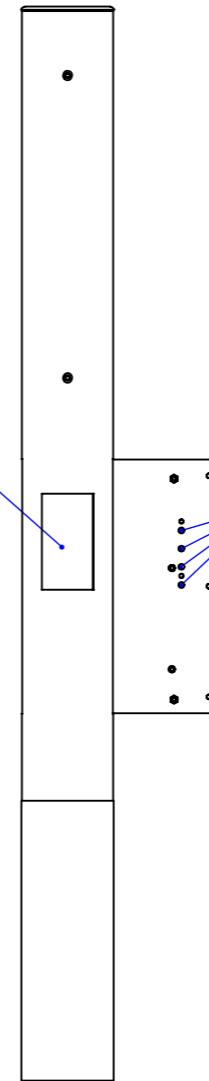
Front View



Side View



Rear View

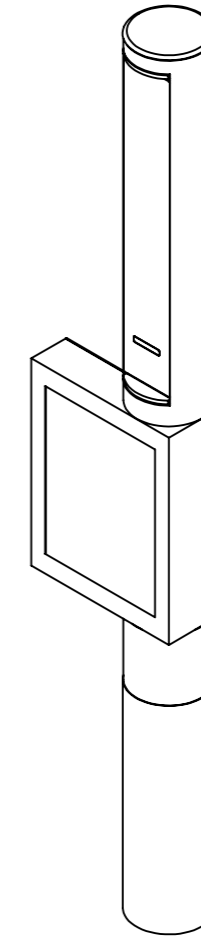


Serial Number and conformity label

Screen Settings Buttons

(refer to user manual for screen instructions)

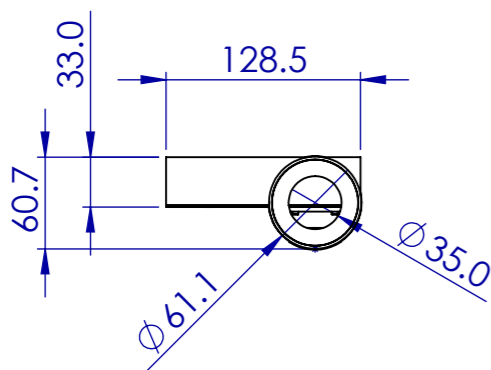
Isometric View



Front View (Colour)



Bottom View



FINISH: Black Dry Powder Coated  
DEBURR AND BREAK SHARP EDGES

| NAME               | SIGNATURE | DATE       |
|--------------------|-----------|------------|
| DRAWN: M Wilkinson |           | 21/04/2022 |
| CHK'D: John Hyde   |           | 19/04/2022 |

**Perception Sensors & Instrumentation LTD.**

Description: ASLOC Pole Assembly 710 Single IR with Left Offset Portrait Screen

UNLESS OTHERWISE SPECIFIED:  
DIMENSIONS ARE IN MILLIMETERS and degrees  
TOLERANCES:  
LINEAR: 0.1  
ANGULAR: 0.5

**PROPRIETARY AND CONFIDENTIAL**  
THE INFORMATION CONTAINED IN THIS DRAWING IS THE SOLE PROPERTY OF PERCEPTION SENSORS & INSTRUMENTATION LTD. ANY REPRODUCTION IN PART OR AS A WHOLE WITHOUT THE WRITTEN PERMISSION OF PERCEPTION SENSORS & INSTRUMENTATION LTD. IS PROHIBITED.

MATERIAL:  
WEIGHT: 1496.4

DWG NO. **PSI-ASLOC-POLEASSY-710-PSCR-02**

REVISION: 1

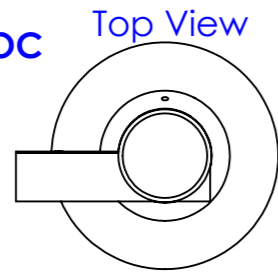
SCALE: 1:5 DO NOT SCALE DRAWING

SHEET 1 OF 2

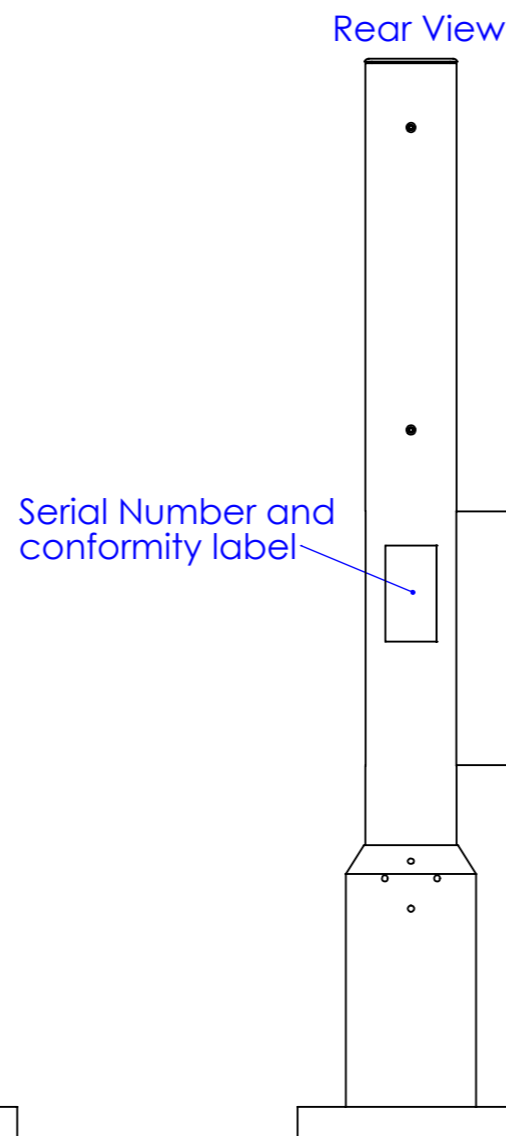
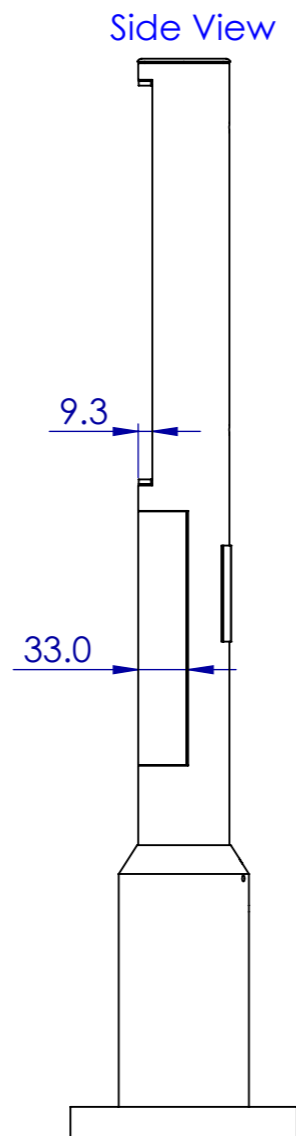
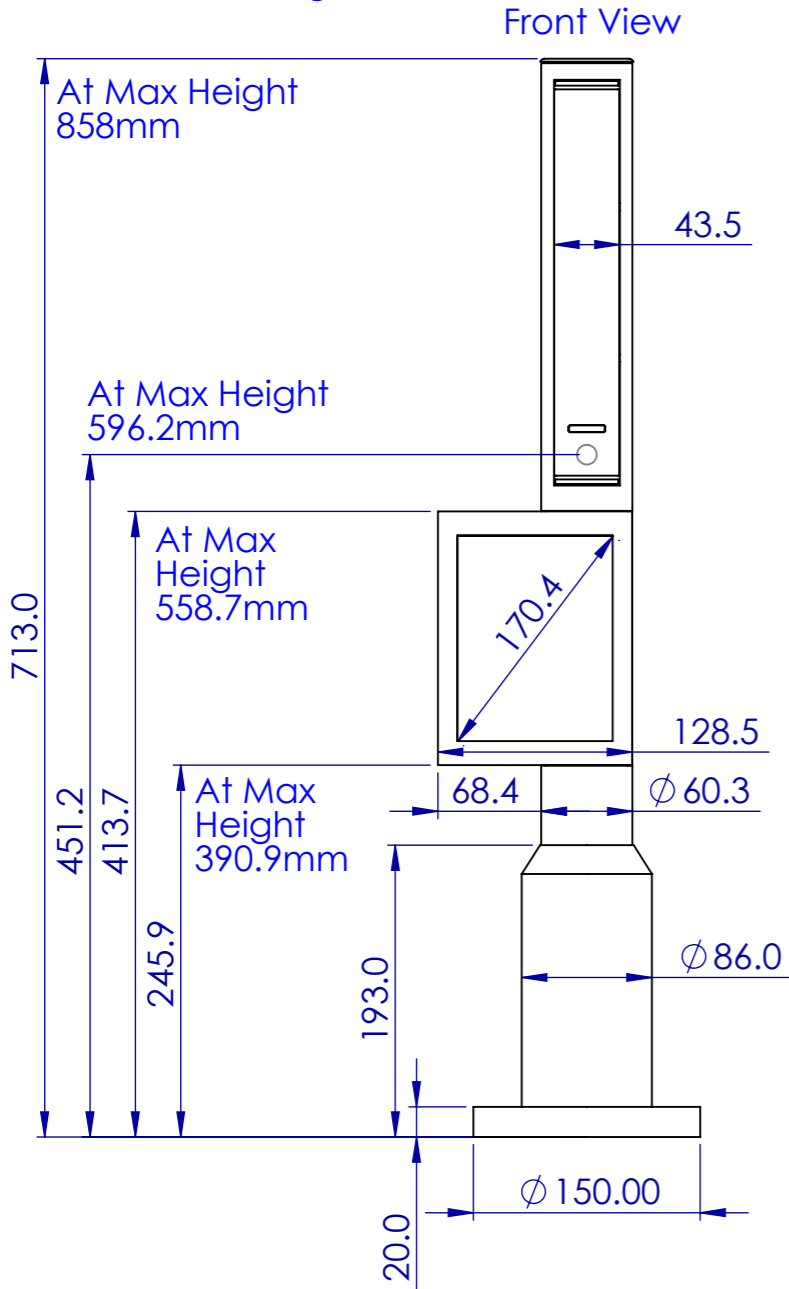
A3



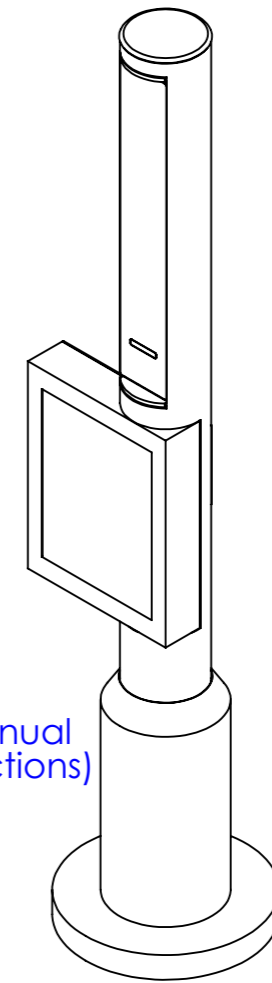
**90-3531P (LOB) 710 ASLOC  
Single IR + Portrait  
Screen (Left Offset)  
with base**



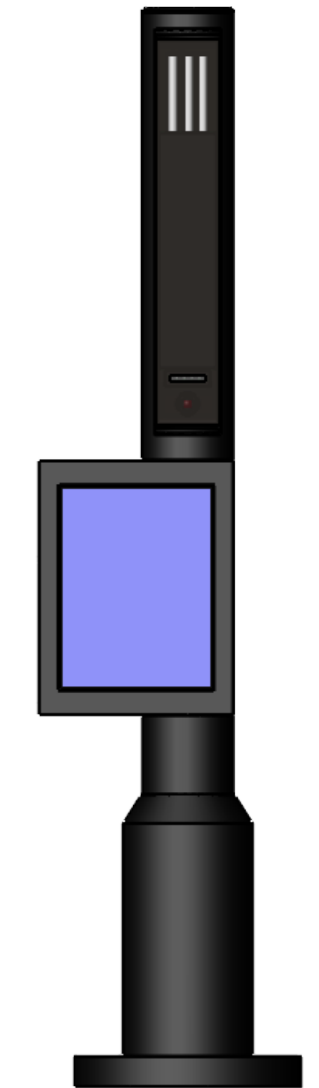
Drawn at Min Height



Isometric View

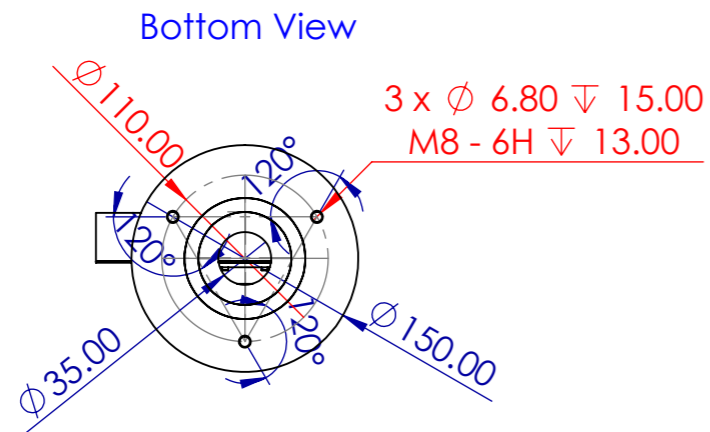


Front View (Colour)



Height Adjustment 145mm

Height adjustment achieved by slightly loosening four M5 grub screws located at the top of the base to free the pole to move. Please note if adjusting from a position higher than minimum, hold the pole to avoid it dropping.



|                         |           |                              |
|-------------------------|-----------|------------------------------|
| FINISH:                 |           | DEBURR AND BREAK SHARP EDGES |
| Black Dry Powder Coated |           |                              |
| NAME                    | SIGNATURE | DATE                         |
| DRAWN M Wilkinson       |           | 21/04/2022                   |
| CHK'D John Hyde         |           | 19/04/2022                   |

**Perception Sensors & Instrumentation LTD.**

Description:  
ASLOC Pole Assembly 710 Single IR with Left Offset Portrait Screen

UNLESS OTHERWISE SPECIFIED:  
DIMENSIONS ARE IN MILLIMETERS and degrees  
TOLERANCES:  
LINEAR: 0.1  
ANGULAR: 0.5

PROPRIETARY AND CONFIDENTIAL  
THE INFORMATION CONTAINED IN THIS DRAWING IS THE SOLE PROPERTY OF PERCEPTION SENSORS & INSTRUMENTATION LTD. ANY REPRODUCTION IN PART OR AS A WHOLE WITHOUT THE WRITTEN PERMISSION OF PERCEPTION SENSORS & INSTRUMENTATION LTD. IS PROHIBITED.

|                |  |                 |
|----------------|--|-----------------|
| MATERIAL:      | DWG NO. PSI-ASLOC-POLEASSY-710-PSCR-02 | REVISION: 1     |
| WEIGHT: 1496.4 | SCALE: 1:5 DO NOT SCALE DRAWING        | SHEET 2 OF 2 A3 |



**90-3531P (LO) 938 ASLOC IR SINGLE + Portrait Screen (Left Offset)  
No Base**

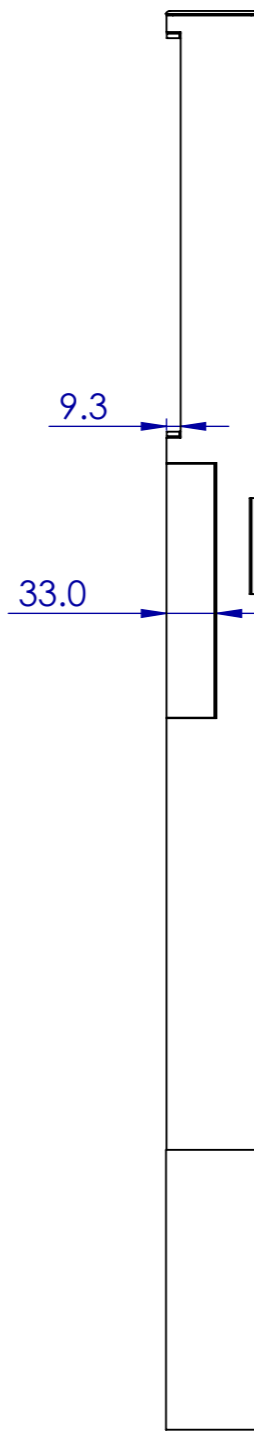
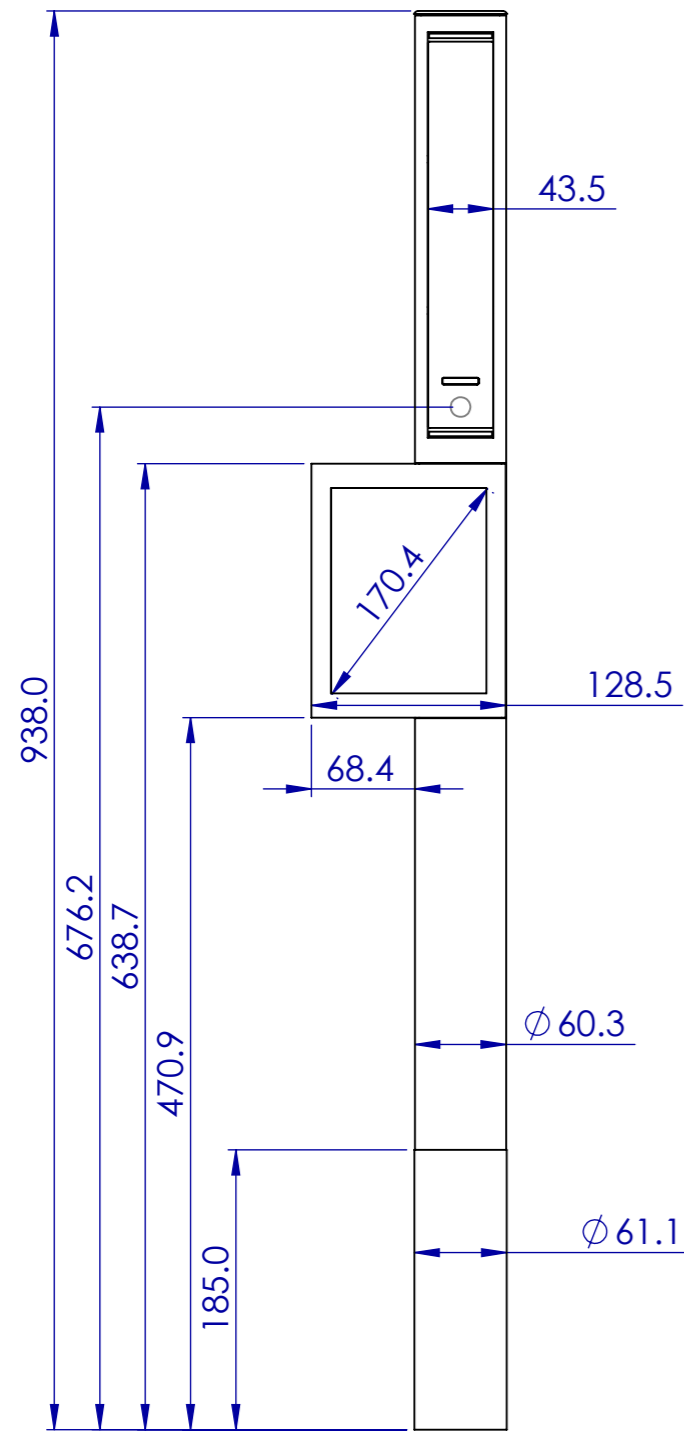
Isometric View

Front View

Side View

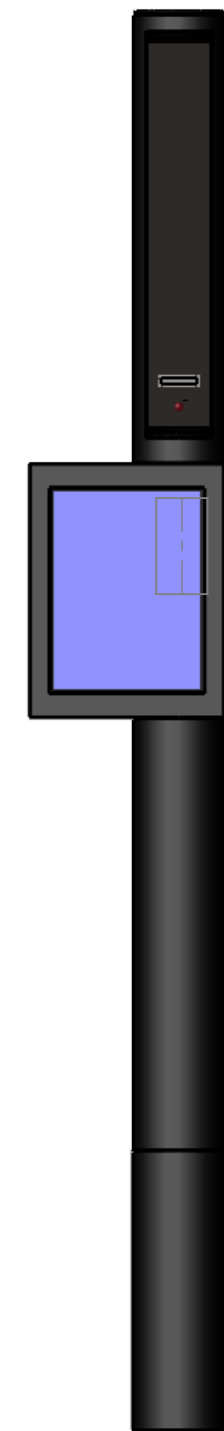
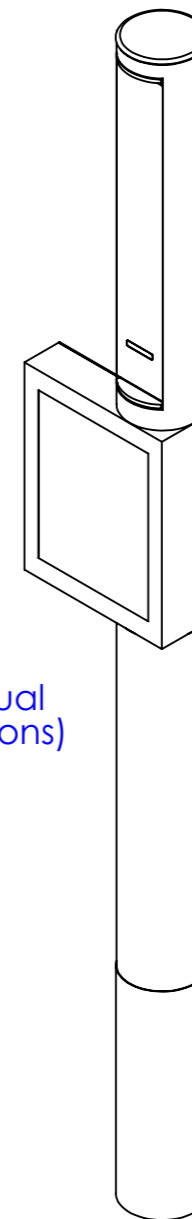
Rear View

Front View (Colour)

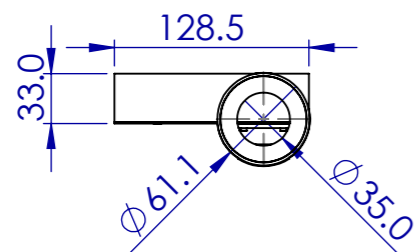


Serial Number and conformity label

Screen Settings Buttons  
(refer to user manual for screen instructions)



Bottom View



FINISH: Black Dry Powder Coated  
DEBURR AND BREAK SHARP EDGES

| NAME              | SIGNATURE | DATE       |
|-------------------|-----------|------------|
| DRAWN M Wilkinson |           | 29/04/2022 |
| CHK'D John Hyde   |           | 29/04/2022 |

**Perception Sensors & Instrumentation LTD.**

Description: ASLOC Pole Assembly 710 Single IR with Left Offset Portrait Screen

UNLESS OTHERWISE SPECIFIED:  
DIMENSIONS ARE IN MILLIMETERS and degrees  
TOLERANCES:  
LINEAR: 0.1  
ANGULAR: 0.5

PROPRIETARY AND CONFIDENTIAL  
THE INFORMATION CONTAINED IN THIS DRAWING IS THE SOLE PROPERTY OF PERCEPTION SENSORS & INSTRUMENTATION LTD. ANY REPRODUCTION IN PART OR AS A WHOLE WITHOUT THE WRITTEN PERMISSION OF PERCEPTION SENSORS & INSTRUMENTATION LTD. IS PROHIBITED.

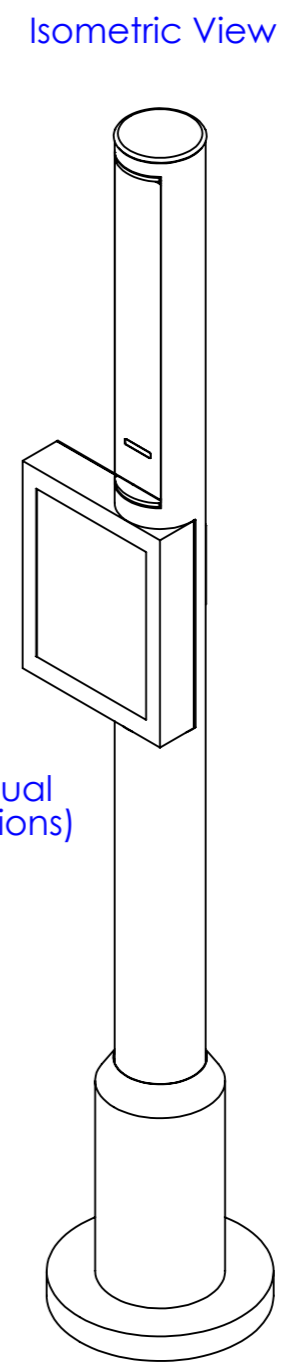
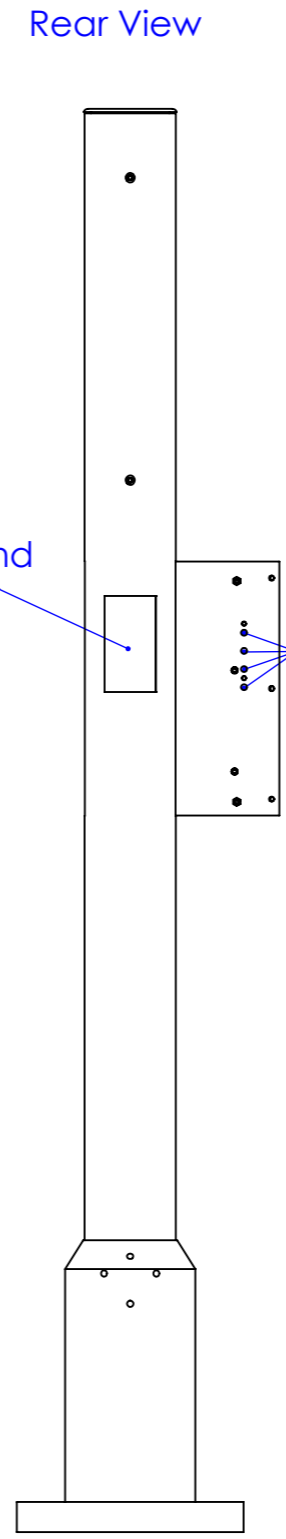
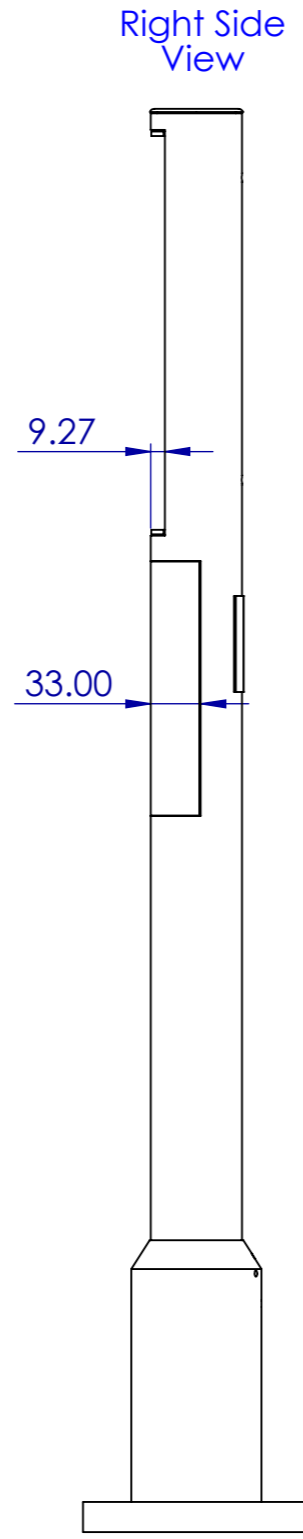
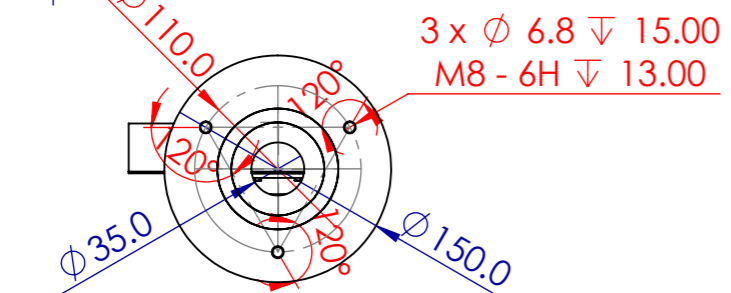
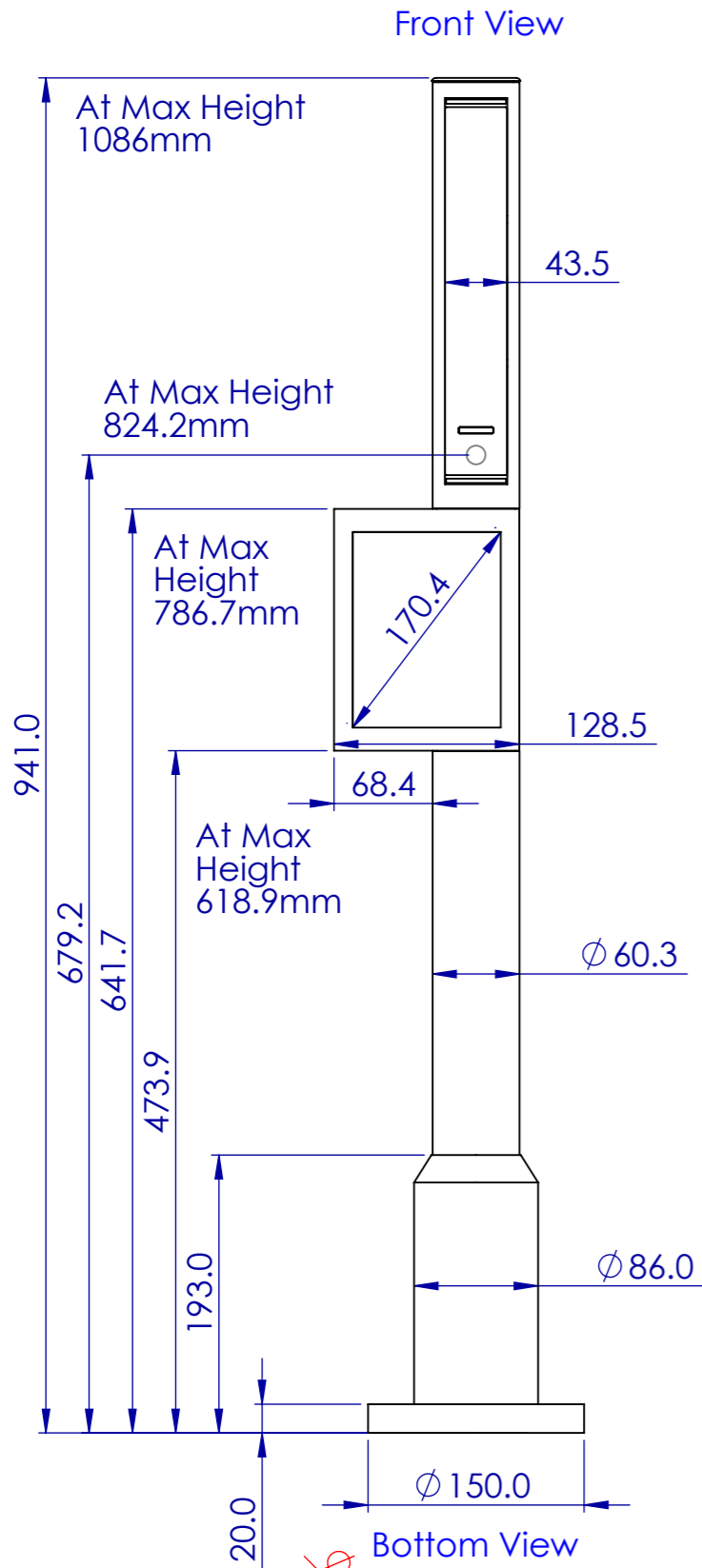
MATERIAL:  
WEIGHT: 1805.7

DWG NO. PSI-ASLOC-POLEASSY-938-PSCR-02  
SCALE: 1:5  
DO NOT SCALE DRAWING

REVISION: 2

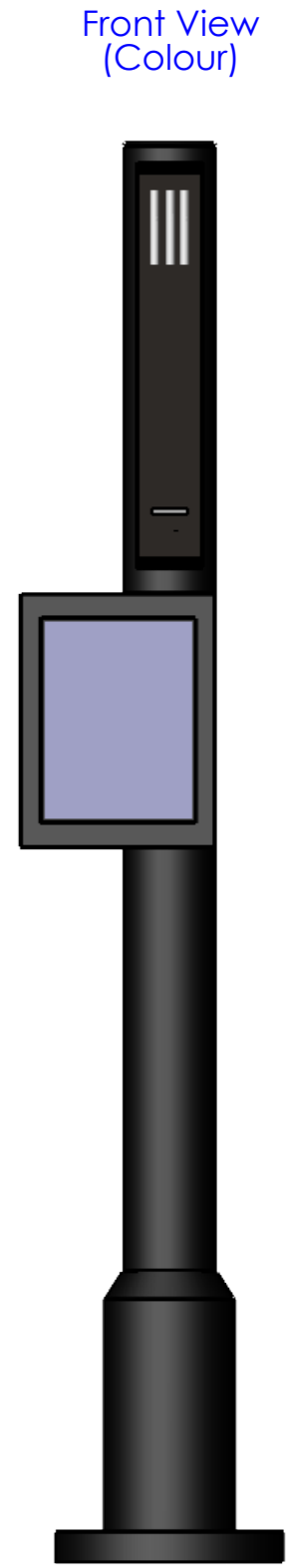
SHEET 1 OF 2 A3

**90-3531P (LOB) 938 ASLOC IR SINGLE + Portrait Screen (Left Offset) With Base**



Height Adjustment 145mm

Height adjustment achieved by slightly loosening four M5 grub screws located at the top of the base to free the pole to move. Please note if adjusting from a position higher than minimum, hold the pole to avoid it dropping.



UNLESS OTHERWISE SPECIFIED:  
DIMENSIONS ARE IN MILLIMETERS and degrees  
TOLERANCES:  
LINEAR: 0.1  
ANGULAR: 0.5

**PROPRIETARY AND CONFIDENTIAL**  
THE INFORMATION CONTAINED IN THIS DRAWING IS THE SOLE PROPERTY OF PERCEPTION SENSORS & INSTRUMENTATION LTD. ANY REPRODUCTION IN PART OR AS A WHOLE WITHOUT THE WRITTEN PERMISSION OF PERCEPTION SENSORS & INSTRUMENTATION LTD. IS PROHIBITED.

|                                    |           |                              |
|------------------------------------|-----------|------------------------------|
| FINISH:<br>Black Dry Powder Coated |           | DEBURR AND BREAK SHARP EDGES |
| NAME                               | SIGNATURE | DATE                         |
| DRAWN<br>M Wilkinson               |           | 29/04/2022                   |
| CHK'D<br>John Hyde                 |           | 29/04/2022                   |

**Perception Sensors & Instrumentation LTD.**

|  |  |                    |
|--|--|--------------------|
| Description:<br>ASLOC Pole Assembly 710 Single IR with Left Offset Portrait Screen |  | REVISION:<br>2     |
| MATERIAL:<br>WEIGHT: 1805.7  | DWG NO.<br>PSI-ASLOC-POLEASSY-938-<br>PSCRP-02 | SHEET 2 OF 2<br>A3 |

SCALE: 1:5 DO NOT SCALE DRAWINGS